

Access to Care. MedTech as Equalizer.

Dr. ing. Serife Seda Kucur Ergünay
Co-Founder & CTO, PeriVision

Access to Care: MedTech as Equalizer

How we make it possible at PeriVision

Serife Seda Kucur
CTO & co-founder
serife@perivision.com

PeriVision SA | Biopôle Phenyl building | Route de la Corniche 3 | 1066 Epalinges | www.perivision.com



Our vision at PeriVision

We make eye testing accessible to everyone – everywhere!





Glaucoma – the silent thief of sight



Chronic eye disease damaging optic nerve



Caused by high intra-ocular pressure (not always!)



Irreversible vision loss



No symptoms, no pain!



Leading to total blindness if not treated timely





Glaucoma – global healthcare burden

0

Cures – lifelong chronic disease

#1

Cause of irreversible blindness

80M

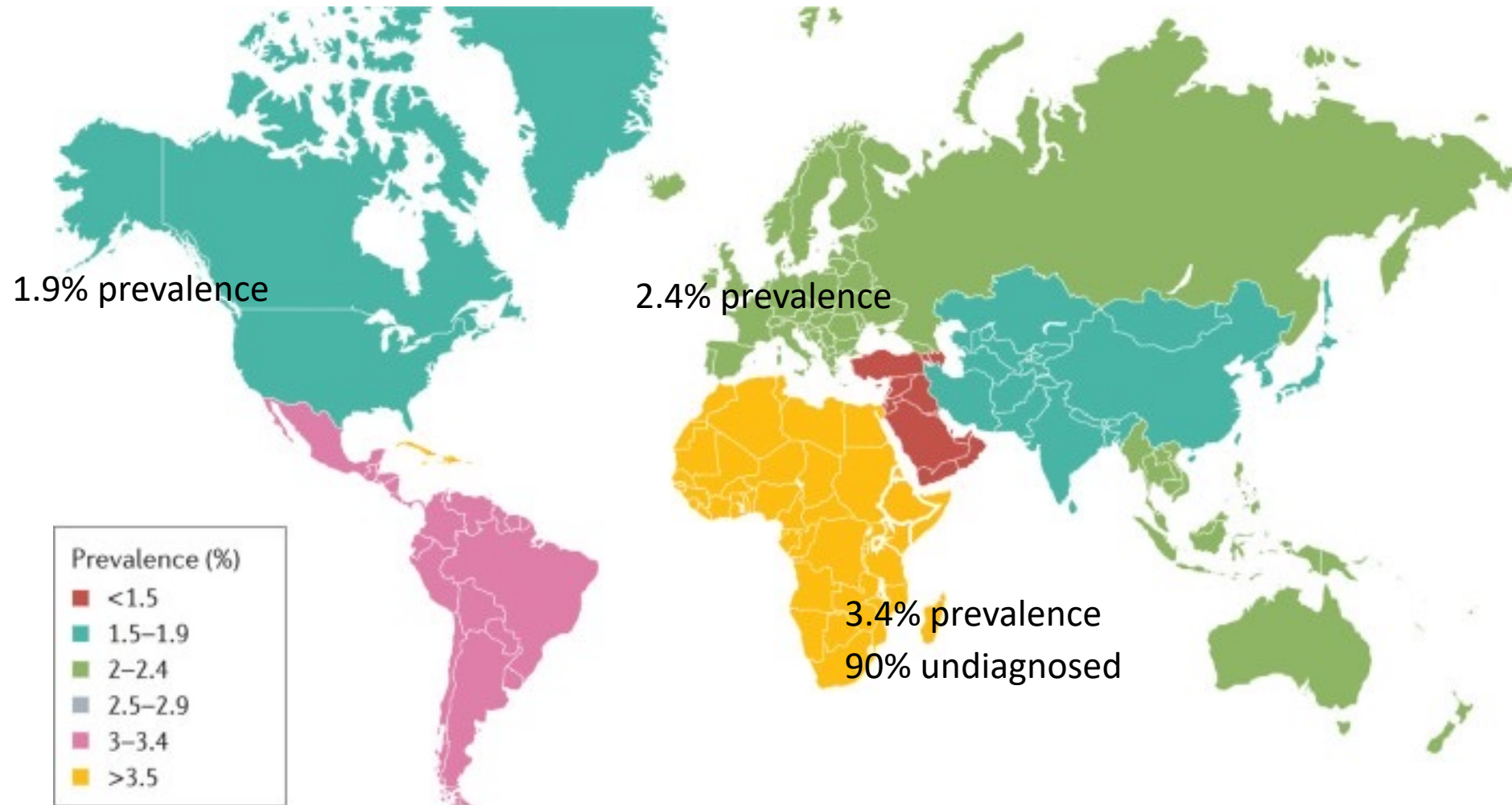
Patients globally

50%

Cases undetected (90% in LMICs)



Glaucoma prevalence is higher in LMICs



Glaucoma as a global healthcare burden

Example of UK



2M

People at risk of blindness

600K

People waiting for eye appointments

64%

Delayed appointments

44%

Increase in demand by 2035



Glaucoma diagnosis & prognosis



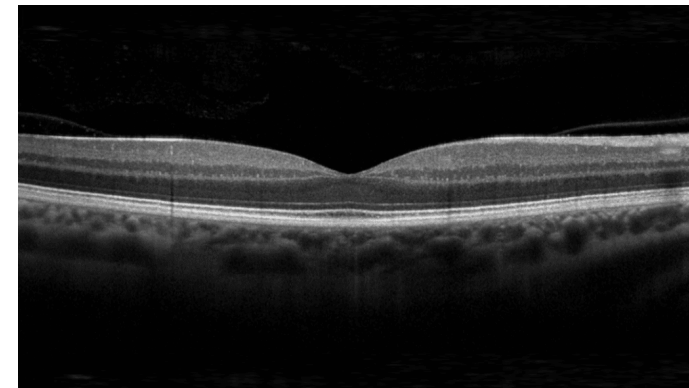
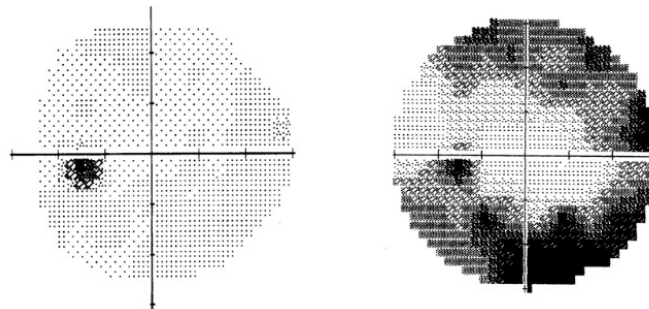
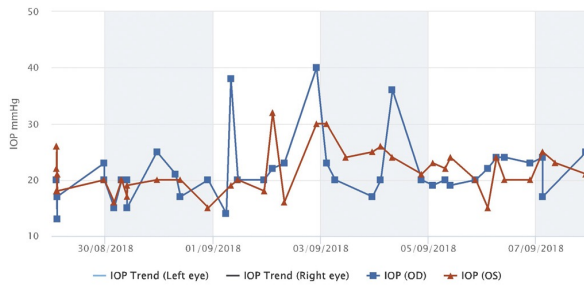
Tonometry – Intraocular pressure



Perimetry – Visual function



Optical Coherence Tomography – Retinal thickness

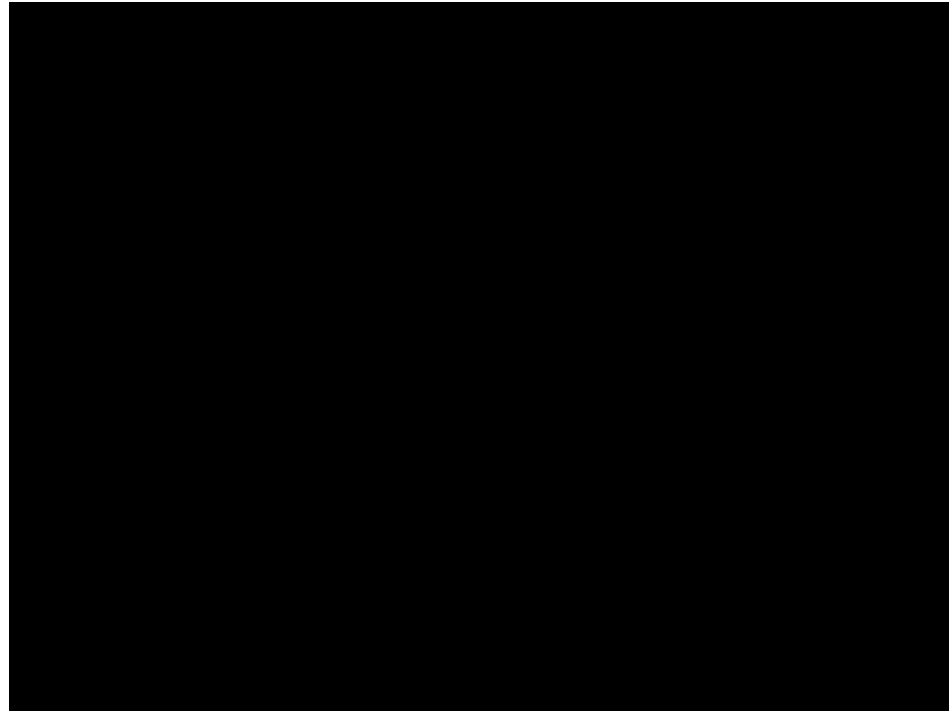


Perimetry

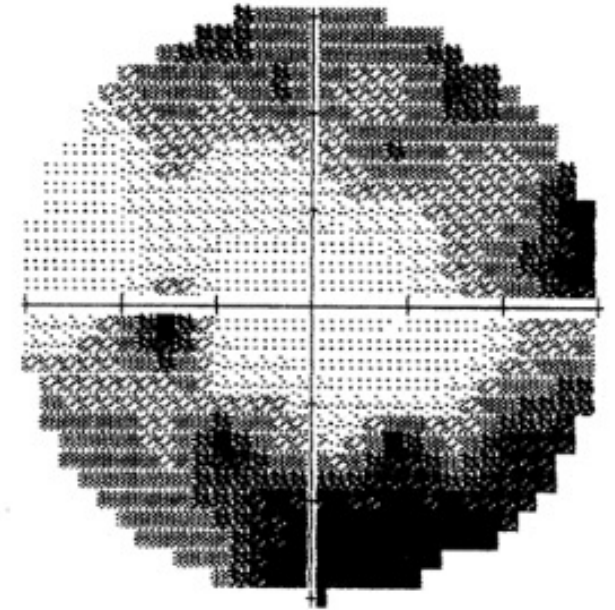
Integral part of glaucoma management



Perimetry setup



Perimetry test



Visual field



Perimetry – costly and tedious

The most hated examination in ophthalmology



Stationary
Dedicated room & assistant



Long & tedious procedure
Uncomfortable



Unreliable/noisy data
Limited insight

**Resource-intensive
procedure with low
patient compliance
leading to both limited
capacity and low quality
data.**

Patients are not treated timely, adequately and fairly.

Inefficient workflow leads to inequality/bias in glaucoma management



Low quality data



Limited accessibility to eye care



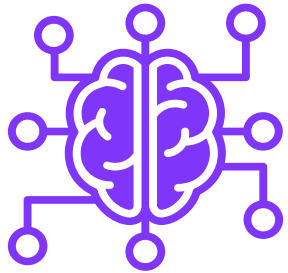
Misrepresentation of ethnic groups in normative databases



PeriVision: introducing VR/AI-based perimetry



VR eye test platform
*connected to the cloud for
decentralized & efficient
clinic workflows*



AI co-pilot *using holistic
patient data for better
diagnostics & prognostics*



Cloud-based clinician app
*allowing clinicians to reach
data from anywhere, anytime*



We optimize clinical workflow end-to-end using AI



Reducing examination time

Detecting early glaucoma cases

Predicting disease progression



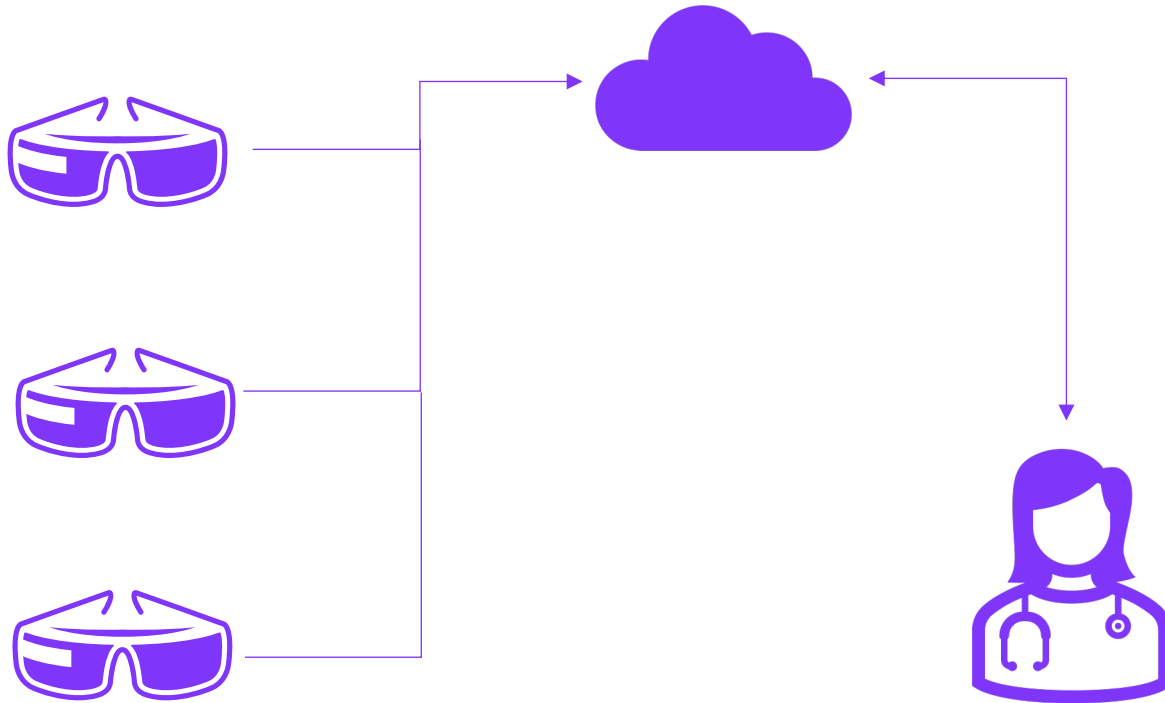
Less fatigue & higher quality data

Increased detected cases

Timely treatment



We aim for higher efficiency & access with cloud-based portable solution



Portable



No dedicated room

Eye tracking
& virtual assistant



No assistant

Less cost
& small footprint



More test availability

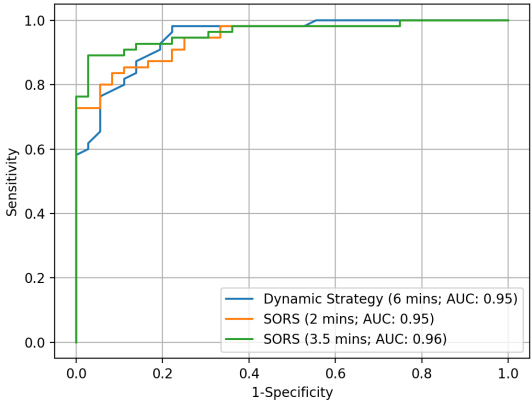


Clinical research showed improved data quality & workflow

Same diagnostic accuracy
 Lower test-retest variability
 70% less examination time

High patient compliance

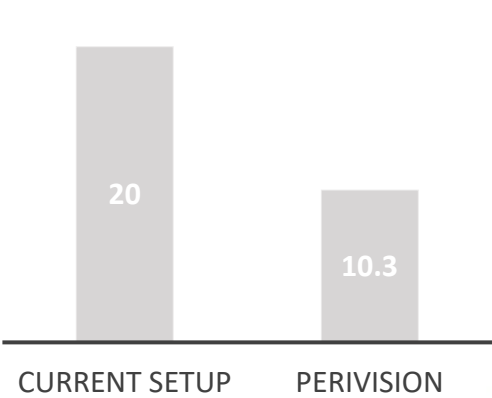
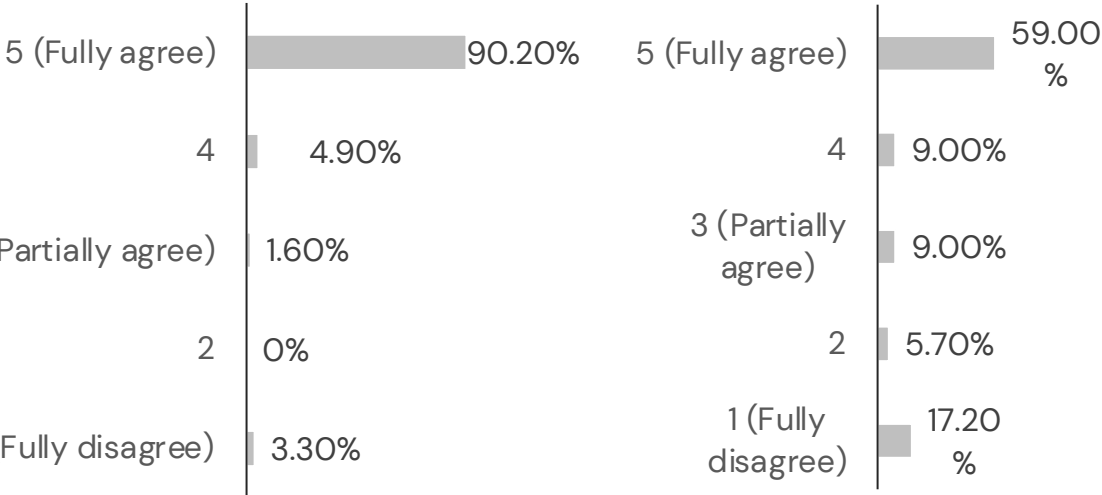
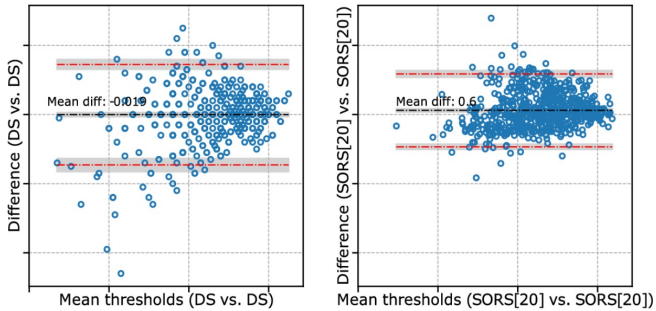
Improved workflow



"I found the system easy to use", in % of respondents

"I dare to use the VR glasses myself to measure the field of view without outside help", in % of respondents

Total procedure time [min.]



PeriVision is boosting efficiency in glaucoma care

+30%

Additional patient volume with PeriVision estimated by eye doctors

-65%

Technician time for visual field with automation / VR assistant

-99%

Space requirement for visual field test with portable headset

95%

Patients perceiving system as easy to use driving higher compliance



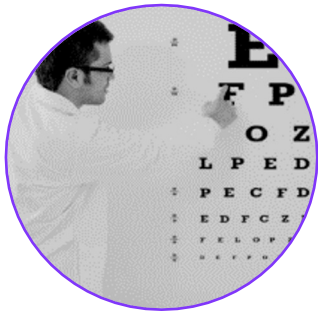
Perimetry is the first step towards multi-testing platform



Micro-perimetry



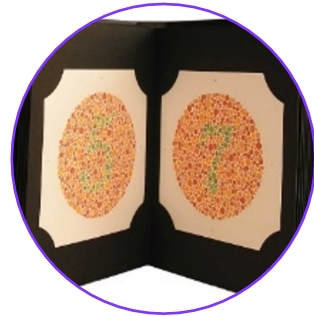
Age-related macular degeneration (196M)



Visual acuity



Any eye disease



Colour vision



Colour vision defects (300M) & neurological disorders



Dark adaptation



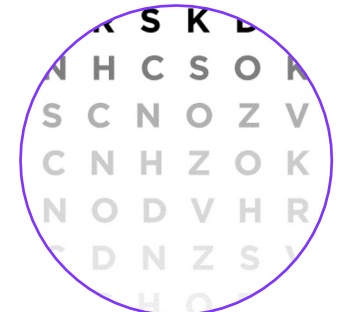
Age-related macular degeneration (196M)



Pupillometry



Neurological disorders



Contrast sensitivity



Cataract (94M), Diabetic retinopathy (146M)



PeriVision creates new care pathways bringing fairness in clinical practice and research



Home monitoring



Efficient clinics



Near-patient monitoring



Non-specialists



Mobile eye care



Remote clinical trials



Population health
management



PeriVision's concrete steps towards more accessible glaucoma care

- National procurement challenge for remote glaucoma monitoring by NHS
- Pilot showcase for remote clinical trials with relevant industrial partners
- Exploring remote glaucoma management in 250+ elderly homes in the US

PeriVision, working with the West of Scotland Innovation Hub

Validation of remote perimetry workflow for glaucoma monitoring

In November 2022, PeriVision was selected to participate in a national procurement challenge for glaucoma monitoring by NHS Scotland funded by the Scottish Government Chief Scientist Office. The aim is to develop and implement remote patient monitoring (RPM) concepts to ease pressure on the NHS and prepare for national procurement in two phases.

<https://innovator.scot/news/99>



**We reimagine eye
care to save
precious eye sight**



Thank you.

peri
VISION

