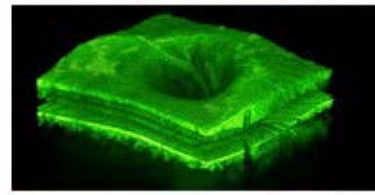


*u*<sup>b</sup>

*b*  
**UNIVERSITÄT  
BERN**

# Center for Artificial Intelligence in Medicine (CAIM)



# Who we are



«At CAIM we use Artificial Intelligence to facilitate the work of doctors and nurses and to deliver better care to patients. Through our expertise in engineering, medicine and life sciences and with low-threshold access to clinical data and research grants for AI in Medicine we support competitive, collaborative, bottom-up projects, cooperation with industry and start-up incubation.»  
Raphael Sznitman, Director CAIM



EDUCATION



DISSEMINATION



INFRASTRUCTURE



RESEARCH FUND



ETHICS

# CAIM activities

Pillar 1



## Digitalization and AI & Education

CAIM provides tailored AI in Medicine education for medical doctors and engineers through a portfolio of competitive and purposefully designed programs.

- › Stavroula Mougikakou  
ARTORG Center, University of Bern
- › Roland Wiest  
Inselspital, Bern University Hospital

Pillar 2



## Network & Dissemination

CAIM transmits trustworthy knowledge on AI in Medicine. This supports policy makers, educators and the general public by shaping current debates.

- › Mauricio Reyes  
ARTORG Center, University of Bern

Pillar 3

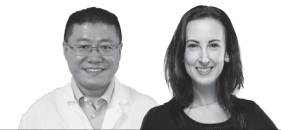


## Computational Infrastructure

CAIM facilitates access and availability to computer infrastructure, computational and data resources to support advanced digitalization and AI research.

- › Alexander Leichtle  
Inselspital, Bern University Hospital

Pillar 4



## Research Fund

CAIM promotes technological innovation by funding projects with strong clinical breakthrough potential and a realistic pathway towards patient benefit.

- › Kuangyu Shi  
Inselspital, Bern University Hospital
- › Inti Zlobec  
Insitute of Pathology, University of Bern

## Embedded Ethics Lab



AI raises ethical questions. CAIM's Ethics Lab provides ethics support for research, education and interaction with clinical and industry partners.

- › Claus Beisbart, Institute of Philosophy, University of Bern
- › Fritz Sager, Center for Public Management, University of Bern
- › Martino Mona, Faculty of Law, University of Bern
- › Rouven Porz, Inselspital, Bern University Hospital

# What we do

## Research

CAIM explores the potential of AI technologies for:

Biosignals



Medical Imaging



Precision Medicine



Health Monitoring



Health Data



Robotics



## Services

CAIM enhances the capabilities of partners through the following services:



Consultancy



Talent Recruitment



Rapid Validation



Secondments



Research Collaboration



Clinical Translation



Computational Resources



Optimized IP Pipeline

## Education

Targeted educational programs and courses of the University of Bern provide AI researchers and clinicians with cutting-edge know-how and qualifications:

Master's programs in

- › AI in Medicine
- › Bioinformatics & Computational Biology
- › Biomedical Engineering

Certificates of Advanced Studies (CAS) in

- › Medical Imaging
- › Applied Data Science
- › Advanced Machine Learning
- › Biomedical Entrepreneurship





# New ventures

CAIM provides support for entrepreneurial activities like commercialization through new venture formation, leadership coaching and access to commercial partners and investors, like the Bern Biomedical Engineering Network.

Our successful start-ups have launched products in ophthalmology, interventional liver cancer treatments and surgical robotics.



## Join our network

- › CAIM brings together expertise from academia in the technical, clinical, legal and ethics domains to support the development and launch of disruptive AI approaches into clinical care.
- › CAIM has the most current awareness and perspectives on existing and arising challenges for stakeholders in policy, national research strategy and society.
- › CAIM supports entrepreneurial translation efforts through access to regulatory guidance, clinical validation and investor networks.
- › CAIM is an initiative of the University of Bern and the Inselspital, Bern University Hospital, partnered by the University Psychiatry Services and the Swiss Institute for Translational and Entrepreneurial Medicine, sitem-insel.



**University of Bern**

Center for Artificial Intelligence in Medicine

Murtenstrasse 50

3008 Bern

Switzerland

[info.caim@unibe.ch](mailto:info.caim@unibe.ch)

[www.caim.unibe.ch](http://www.caim.unibe.ch)